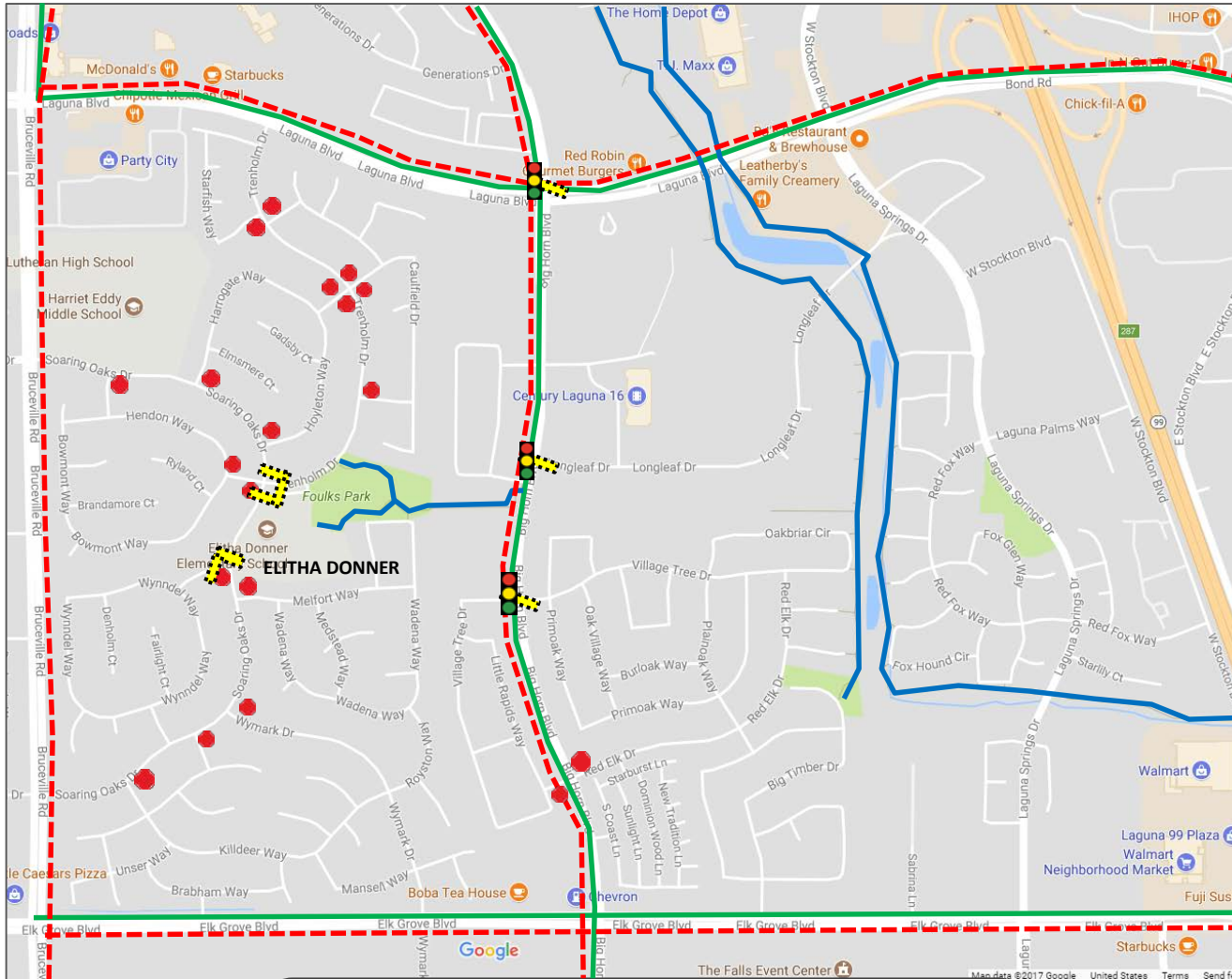




# Elitha Donner Elementary School

## Safe Routes to School Map



### Be Active & Safe!

#### Walking

- Walk on sidewalks.
- Watch for cars pulling out of driveways and stop to make sure they see you.
- Always cross the street where there is a crosswalk or a stop sign (even if you have to walk a little farther, it is safer).
- At street crossings, stop 3 ft. from the curb.
- **Look left, right, and left again before crossing.**
- Make eye contact with drivers before crossing.
- Do not trust that cars will always obey the rules of the road and stop for you. **You must decide when it is safest to cross.**
- Walk. Don't run across the street.
- Do not use electronic devices when walking to school (e.g., cell phones, music players).

#### Biking

- Always wear a properly fitted bike helmet.
- Ride on the street in the **SAME DIRECTION** as cars are traveling.
- Obey all traffic signs and signals; this means stopping at stop signs and/or crosswalks when walkers are present.
- Be alert and scan parked cars along your route. Look to see if there are people in cars who might open their door or pull out in front of you.
- Consider walking your bike on the sidewalk when you are near school to avoid crowded car traffic and walkers.

## Donner Elementary Vehicle Drop-off & Pick-up Procedures

Safety is the highest priority at Donner and within Elk Grove Unified School District. Following the procedures below will help to keep your school community safe when you transport your child to/from the instructional site. It is the shared responsibility of staff, parents, students, and neighborhood residents to act with care and concern for others around the school site.

- The primary school drop-off/pick-up zone is in the main parking lot entering from Soaring Oaks Dr. Remain in your car at all times.
- The staff parking lot is for employees of Elitha Donner Elementary ONLY, no student drop-off, pick-up, or waiting is allowed in the STAFF parking lot.
- BE WISE - U-turns are not permitted in a residential district when vehicles are approaching within 200 feet which is the case during school arrival and dismissal times. *California Vehicle Code 22103*
- Be ACCOUNTABLE - Pedestrians must use crosswalks at all times when crossing the street and in the parking lot.
- BE VIGILANT - Double parking whether the car is occupied or not is not permitted even to drop off or pick up your child. *California Vehicle Code 22500*
- BE EMPATHETIC - pull forward as far as you can to the front of the drop-off zone before allowing your child to exit your vehicle. *Make sure your child is ready to exit your vehicle in a quick and efficient manner when you enter the drop-off zone.*
- Parents can also park in the main parking lot to escort their student(s) to class. If you are walking your child to class or picking them up from the classroom, you must park in an open space in the main parking lot or in the neighborhood.
- There are several alternate areas parents can use for drop-off/pick-up including the frontage of neighboring Foulks Park (on Trenholm or Quesnel Cir.).
- If you would like to walk with your child but live farther away, you can park a few blocks away from school in the neighborhood and walk in together.



### Courteous Driving

- Be alert for children walking and biking to school.
- Children have a narrower field of vision than adults and often cannot accurately judge distance and speed, and are more likely to dart out into the street.
- Always drive slower (25 MPH or less) around the school during peak arrival and dismissal times.
- Do not drop children off in the middle of the parking lot or street. Always drop them off at the curbside.
- Do not stop inside of or block visibility of crosswalks.
- Do not park at the very end of street blocks; it makes it hard for walkers to see and be seen at crossings.
- Do not use cell phones or other hand-held electronic devices while driving.

Visit EGUSD Safe Routes to School

<http://blogs.egusd.net/saferoutes/>